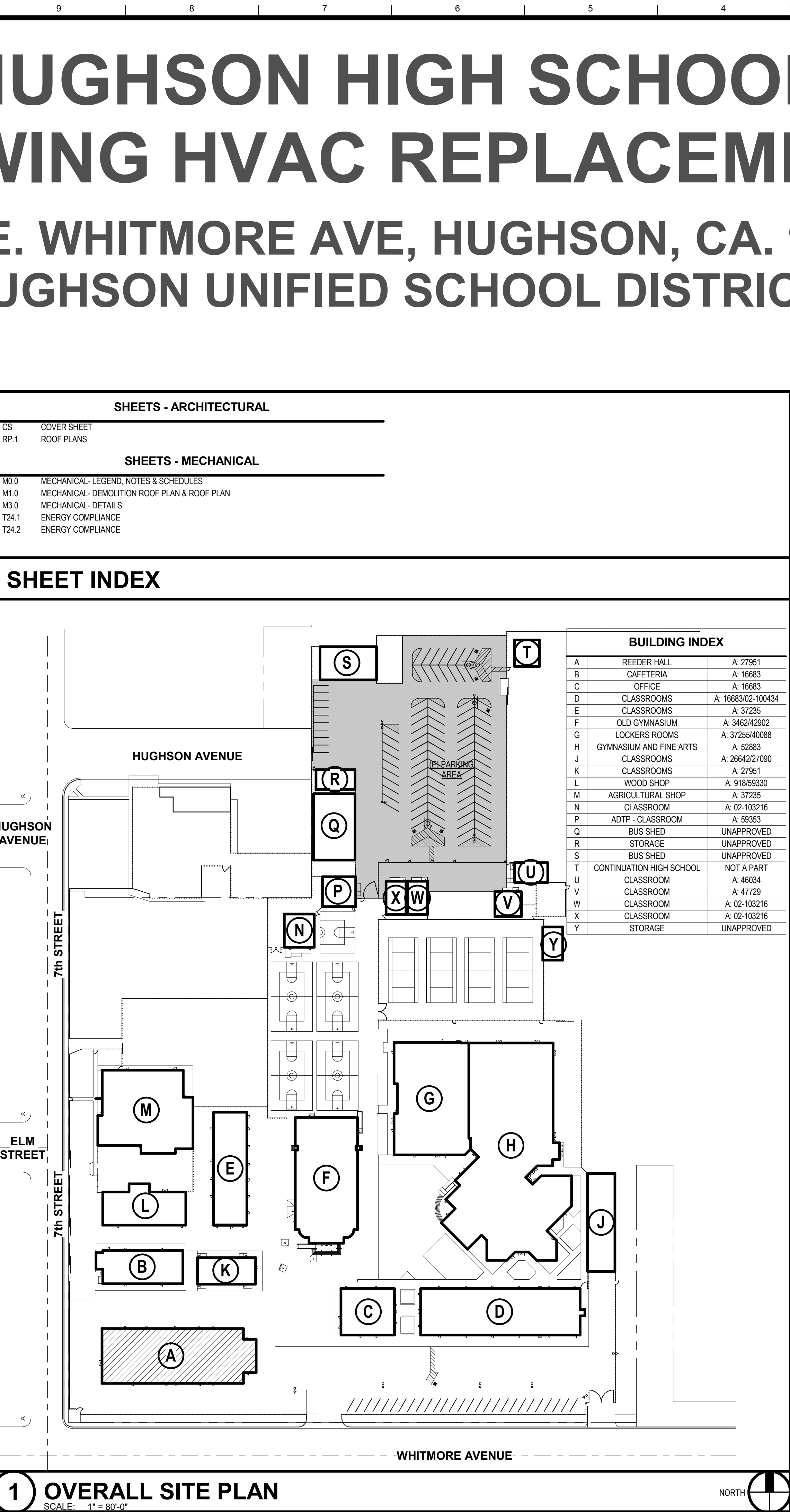


N:\PROJECTS\HUGHSON\2502\_30 Wing HVAC Replacement\Consultants\HCS\2502\_HHS 30 Wing HVAC\_v1.rvt

Table of abbreviations and their corresponding full names, organized in two columns.

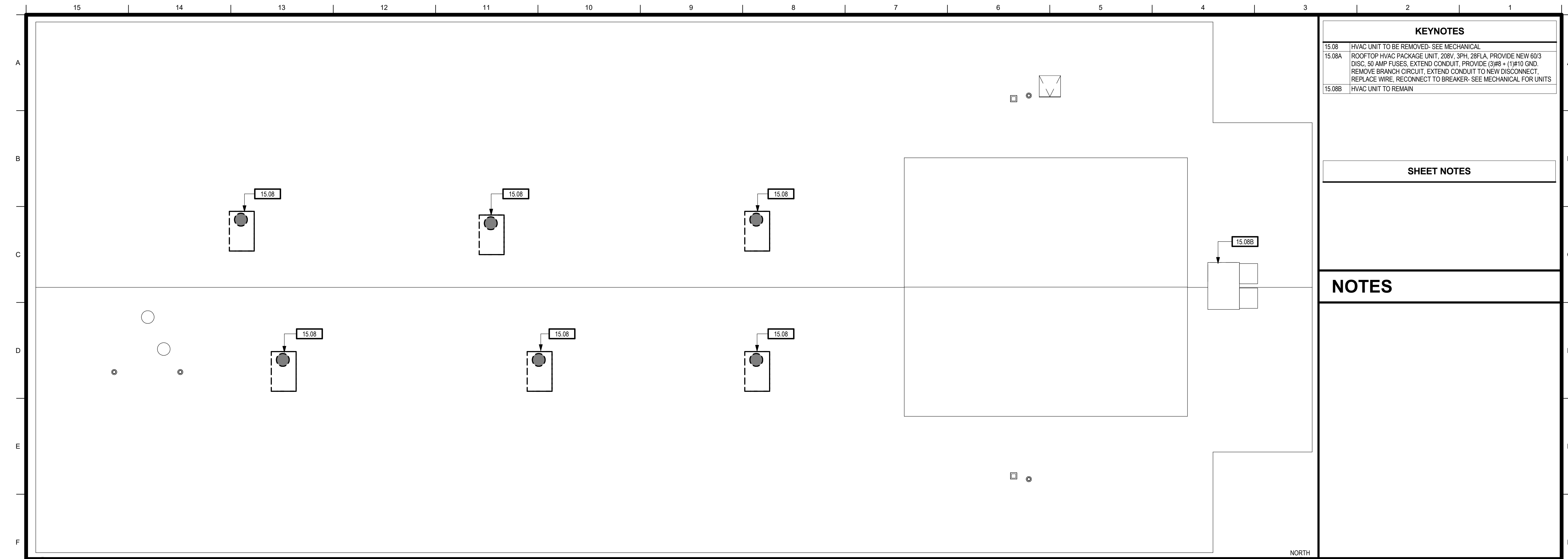
Table of applicable codes and standards, including sections for general notes and specific code references like Title 19 CCR and Title 24 CCR.



Project information section including CLIENT (HUGHSON UNIFIED SCHOOL DISTRICT), ARCHITECT (TIMOTHY P. HUFF & ASSOCIATES), MECHANICAL ENGINEER (NEXUS ENGINEERING), ELECTRICAL ENGINEER (HCS ENGINEERING, INC.), PROJECT TEAM, SCOPE OF WORK, and VICINITY MAP.

HUGHSON HIGH SCHOOL
30 WING HVAC REPLACEMENT
7419 E. WHITMORE AVE, HUGHSON, CA. 95326
HUGHSON UNIFIED SCHOOL DISTRICT

Vertical sidebar containing the TPH architects logo, contact information for Timothy P. Huff & Associates, Inc., a professional seal, and project details including project number 2502, date 1/15/25, and drawing author RRM.



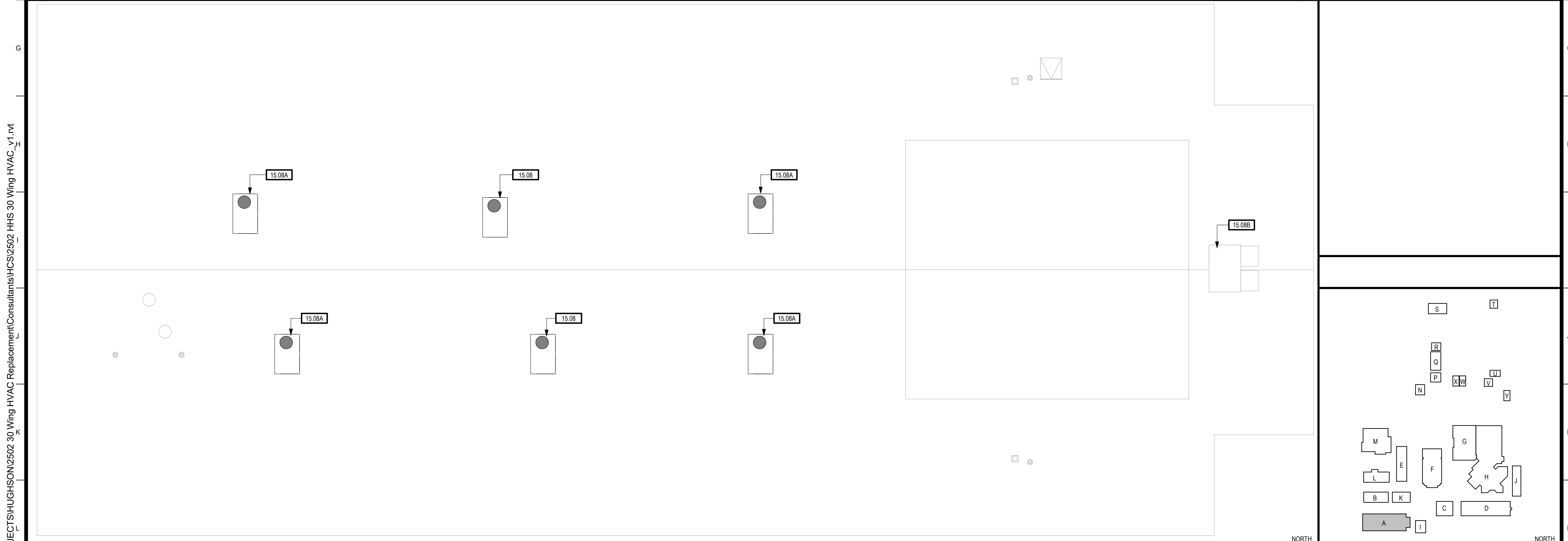
**1 DEMO ROOF PLAN**  
SCALE: 1/8" = 1'-0"

**KEYNOTES**

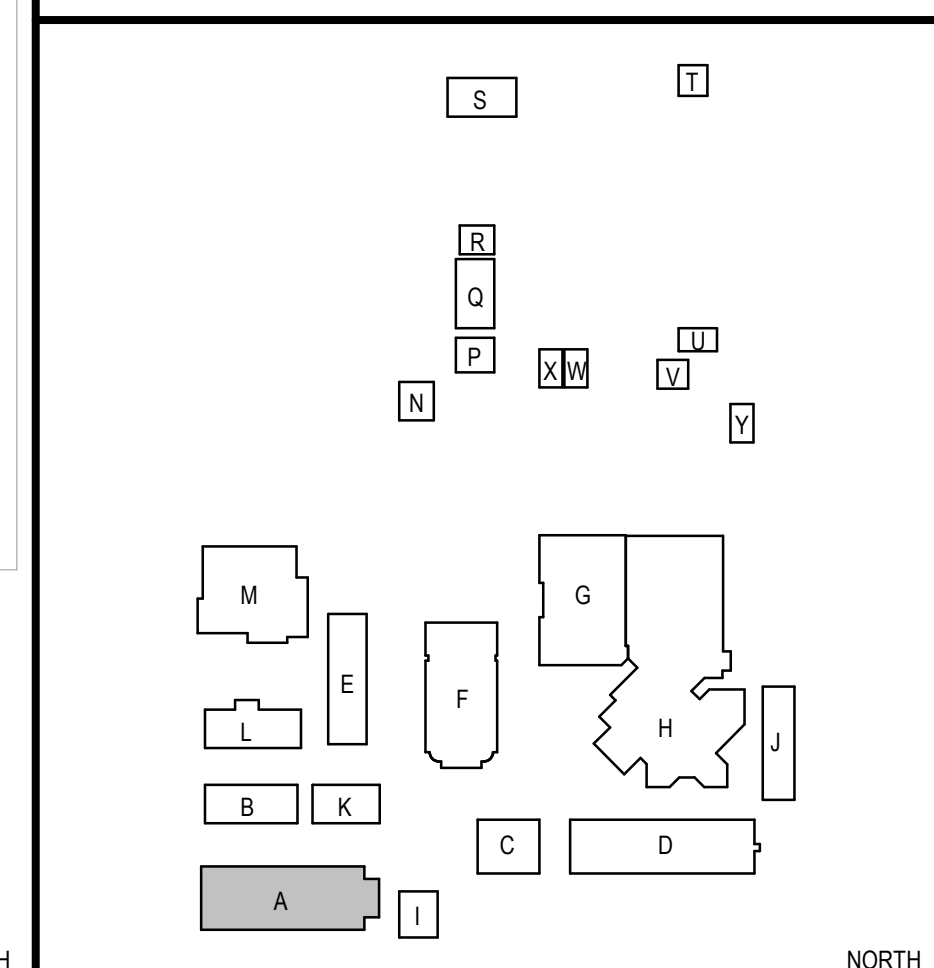
15.08	HVAC UNIT TO BE REMOVED- SEE MECHANICAL
15.08A	ROOFTOP HVAC PACKAGE UNIT, 208V, 3PH, 28FLA. PROVIDE NEW 60/3 DISC, 50 AMP FUSES, EXTEND CONDUIT, PROVIDE (3) #6 + (1) #10 GND. REMOVE BRANCH CIRCUIT, EXTEND CONDUIT TO NEW DISCONNECT. REPLACE WIRE, RECONNECT TO BREAKER. SEE MECHANICAL FOR UNITS
15.08B	HVAC UNIT TO REMAIN

**SHEET NOTES**

**NOTES**



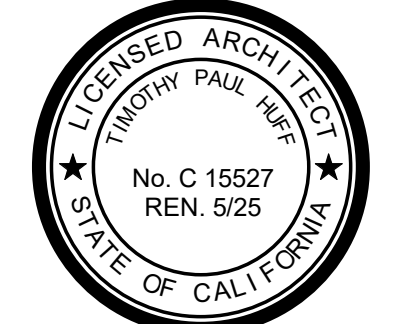
**2 ROOF PLAN**  
SCALE: 1/8" = 1'-0"



**KEYPLAN**



**TIMOTHY P. HUFF & ASSOCIATES, INC.**  
Timothy P. Huff, AIA Architect  
519 McHenry Ave., Modesto, CA 95354  
Ph: (209) 571-2232 Fax: (209) 571-1936



Copyright 2025 - Timothy P. Huff & Associates

Consultants

**HUGHSON HIGH SCHOOL 30 WING HVAC REPLACEMENT**  
7419 E. WHITMORE AVENUE  
HUGHSON, CA. 95326  
HUGHSON UNIFIED SCHOOL DISTRICT  
**ROOF PLANS**

Project Number	2502
Date	1/15/25
Drawn by	Author
Checked by	Checker

**RP.1**

Plot Date & Time 2/4/2025 10:56:22 AM

N:\PROJECTS\HUGHSON\2502\_30 Wing HVAC Replacement\Consultants\HCS\2502 HHS 30 Wing HVAC\_v1.rvt

PACKAGED ROOFTOP AC UNIT SCHEDULE table with columns: MK. NO., MANUFACTURER & MODEL #, DESCRIPTION, NOM. TONS, CFM, OSA CFM, COOLING MBH TOTAL, HEATING MBH INPUT/OUTPUT, E.S.P. IN W.G., MOTOR B.H.P., ELECTRICAL VOLTS, PH, HZ, MCA, MOCP, OP. WT. LBS., (E)OP. WT. LBS., AFUE %, SEER, NOTES. Includes notes about economizer, thermostat, and freezing protection.

MEP Component Anchorage Note
All mechanical, plumbing, and electrical components shall be anchored and installed per the details on the DSA approved construction documents...
Piping, Ductwork, and Electrical Distribution System Bracing Note
Piping, ductwork, and electrical distribution systems shall be braced to comply with the forces and displacements prescribed in ASCE 7-16 Section 13.3 as defined in ASCE 7-16 Section 13.6.5, 13.6.6, 13.6.7, 13.6.8 and 2022 CBC, Sections 1617A.1.24, 1617A.1.25 and 1617A.1.26.

MECHANICAL GENERAL NOTES
1. SCOPE: A UNIT REPLACEMENT FOR BUILDING 30, INCLUDING MECHANICAL EQUIPMENT & DUCTWORK AS GENERALLY DELINEATED ON THE DRAWINGS. EQUIPMENT SHALL COMPLY WITH TITLE 24 CALIFORNIA CODE OF REGULATIONS.
2. ALL WORK MATERIAL AND EQUIPMENT SHALL BE FURNISHED AND INSTALLED IN COMPLIANCE WITH THE FOLLOWING CODES AS ADOPTED AND AMENDED BY THE INSPECTING AUTHORITY HAVING JURISDICTION...
3. WORKMANSHIP: ALL WORKMANSHIP SHALL BE DONE IN A NEAT AND ORDERLY MANNER ACCORDING TO THE BEST TRADE PRACTICE BY THOSE SKILLED IN THE PARTICULAR TRADE...

DUCTWORK NOTES
1. ALL WORK TO BE DONE IN ACCORDANCE WITH THE LATEST EDITION OF THE APPLICABLE SMACNA STANDARDS AND FABRICATION GUIDELINES. ALL METAL DUCTS SHALL BE CONSTRUCTED OF GALVANIZED SHEET METAL PER CALIFORNIA MECHANICAL CODE STANDARDS, UNLESS NOTED OTHERWISE.
2. DUCT PRESSURE CLASS SHALL BE MINIMUM 2" W.C. AND SHALL EXCEED THE FAN SYSTEM DESIGN EXTERNAL STATIC PRESSURE WHERE APPLICABLE.

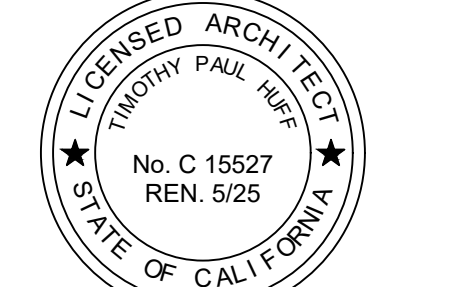
DEMOLITION NOTES
1. THE CONTRACTOR SHALL VISIT THE PROJECT SITE AND MAKE HIMSELF AWARE OF ALL EXISTING CONDITIONS WHICH CAN BE OBSERVED. ADDITIONAL COSTS WILL NOT BE ALLOWED FOR CORRECTION OF ITEMS WHICH CAN BE OBSERVED AND THEREFORE SHOULD BE INCLUDED IN HIS BID. THE CONTRACTOR IS RESPONSIBLE FOR ALL DEMOLITION WORK REQUIRED TO COMPLETE THIS PROPOSED PROJECT.

MECHANICAL LEGEND table with columns: DESCRIPTION, SYMBOL. Includes symbols for supply air duct cross section, return air duct cross section, duct size net inside dimension, smoke detector, equipment tag, and various equipment types like access door and flow switch.

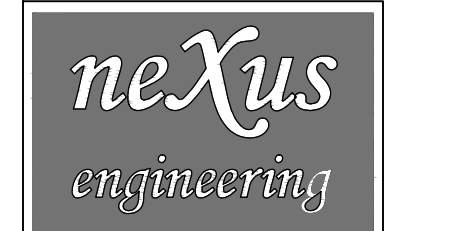
SHEET INDEX table with columns: SHEET NO., DESCRIPTION. Lists sheets M-100 (MECHANICAL - LEGEND, NOTES & SCHEDULES) and M-101 (MECHANICAL - FLOOR PLAN).



TIMOTHY P. HUFF & ASSOCIATES, INC.
Timothy P. Huff, AIA Architect
519 McHenry Ave., Modesto, CA 95354
Ph: (209) 571-2232 Fax: (209) 571-1936



Copyright 2025 - Timothy P. Huff & Associates



Consulting Mechanical Engineers
1400 Lone Palm Ave, Suite A
Modesto, CA 95351
Tel: 209.572.7399 Fax: 209.236.1579
www.nexusengineering.net
HVAC, Plumbing/Piping, Fire Sprinklers
Process/Plant Engineering, Refrigeration



Consultants

HUGHSON HIGH SCHOOL 30 WING HVAC AND REROOF

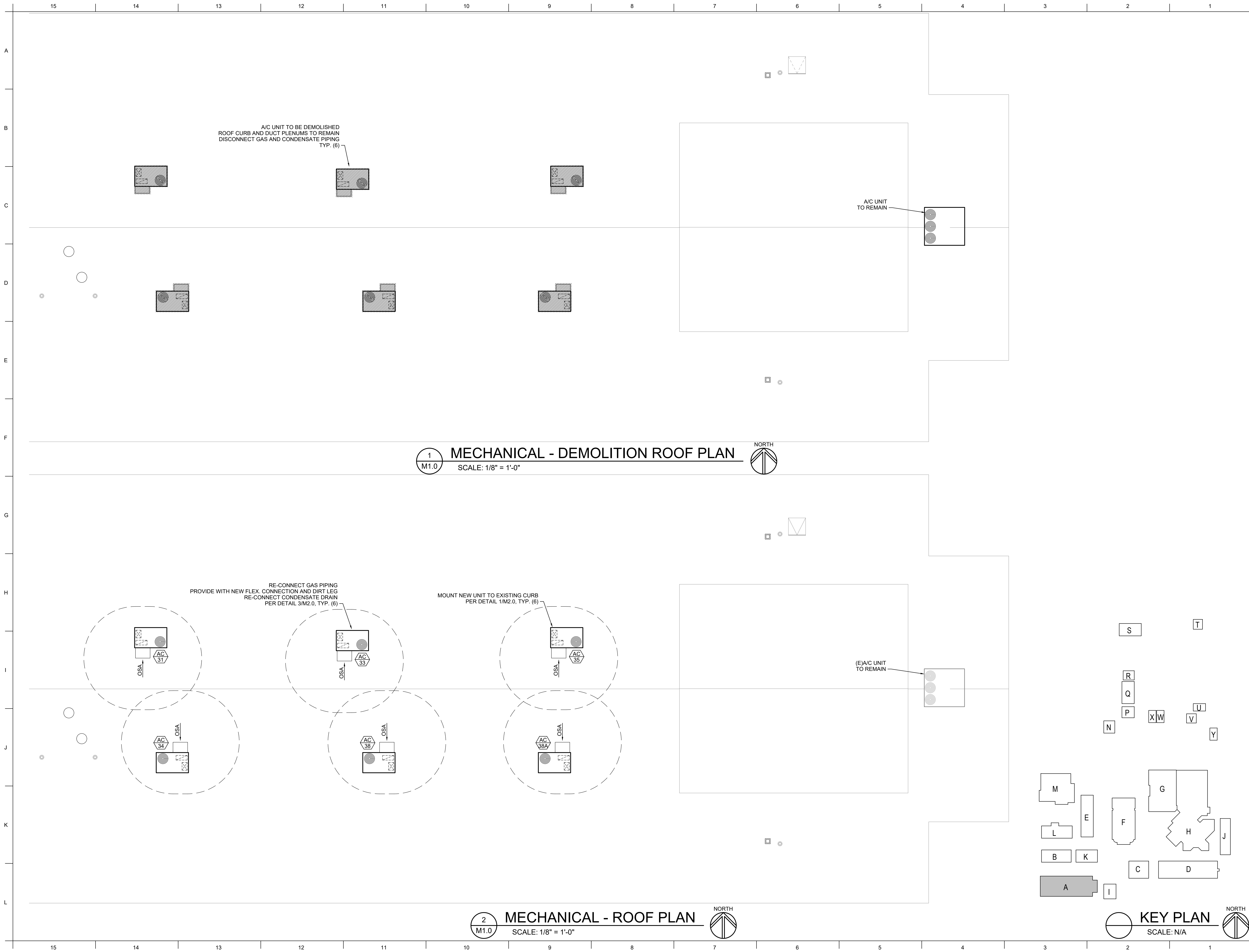
7419 E. WHITMORE AVENUE
HUGHSON, CA. 95326
HUGHSON UNIFIED SCHOOL DISTRICT

MECHANICAL - LEGEND, NOTES & SCHEDULES

Table with columns: Project Number, Date, Drawn by, Checked by. Values: 2502, 1/15/25, DW, GL.

MO.0

Plot Date & Time



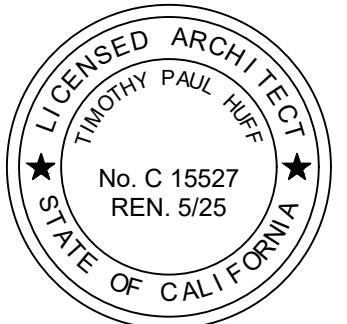
1 MECHANICAL - DEMOLITION ROOF PLAN  
M1.0 SCALE: 1/8" = 1'-0"

2 MECHANICAL - ROOF PLAN  
M1.0 SCALE: 1/8" = 1'-0"

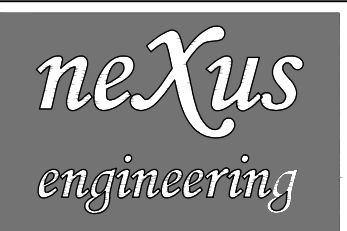
KEY PLAN  
SCALE: N/A



**TIMOTHY P. HUFF & ASSOCIATES, INC.**  
Timothy P. Huff, AIA Architect  
519 McHenry Ave., Modesto, CA 95354  
Ph: (209) 571-2232 Fax: (209) 571-1936



Copyright 2025 - Timothy P. Huff & Associates



Consulting Mechanical Engineers  
1400 Lone Palm Ave., Suite A  
Modesto, CA 95351  
Tel: 209.572.7399 Fax: 209.236.1579  
www.nexusengineering.net  
HVAC, Plumbing/Piping, Fire Sprinklers  
Process/Plant Engineering, Refrigeration



Consultants

**HUGHSON HIGH SCHOOL 30 WING HVAC AND REROOF**

7419 E. WHITMORE AVENUE  
HUGHSON, CA. 95326  
HUGHSON UNIFIED SCHOOL DISTRICT

**MECHANICAL - DEMOLITION ROOF PLAN & ROOF PLAN**

Project Number	2502
Date	1/15/25
Drawn by	DW
Checked by	GL

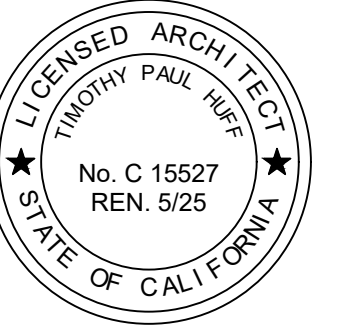
**M1.0**

Plot Date & Time

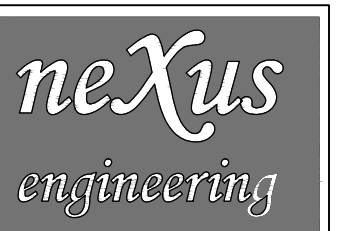
J:\2024 Jobs\24401A - Hughson HS Bldg 30 Unit Replacement\24401A - Mechanical.dwg, 2/4/2025 10:48:49 AM, d.wilson



**TIMOTHY P. HUFF & ASSOCIATES, INC.**  
 Timothy P. Huff, AIA Architect  
 519 McHenry Ave., Modesto, CA 95354  
 Ph: (209) 571-2232 Fax: (209) 571-1936



Copyright 2025 - Timothy P. Huff & Associates



Consulting Mechanical Engineers  
 1400 Lone Palm Ave., Suite A  
 Modesto, CA 95351  
 Tel: 209.572.7399 Fax: 209.236.1579  
[www.nexusengineering.net](http://www.nexusengineering.net)  
 HVAC, Plumbing/Piping, Fire Sprinklers  
 Process/Plant Engineering, Refrigeration



Consultants

**HUGHSON HIGH SCHOOL 30 WING HVAC AND REROOF**

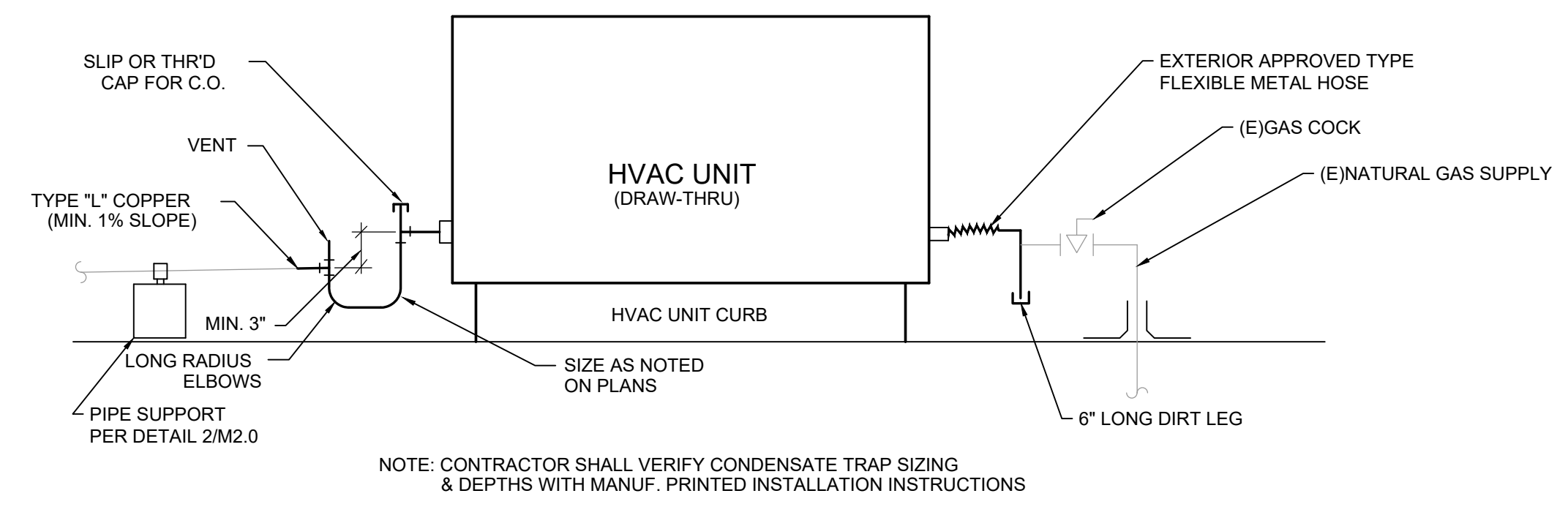
7419 E. WHITMORE AVENUE  
 HUGHSON, CA. 95326  
 HUGHSON UNIFIED SCHOOL DISTRICT

**MECHANICAL - DETAILS**

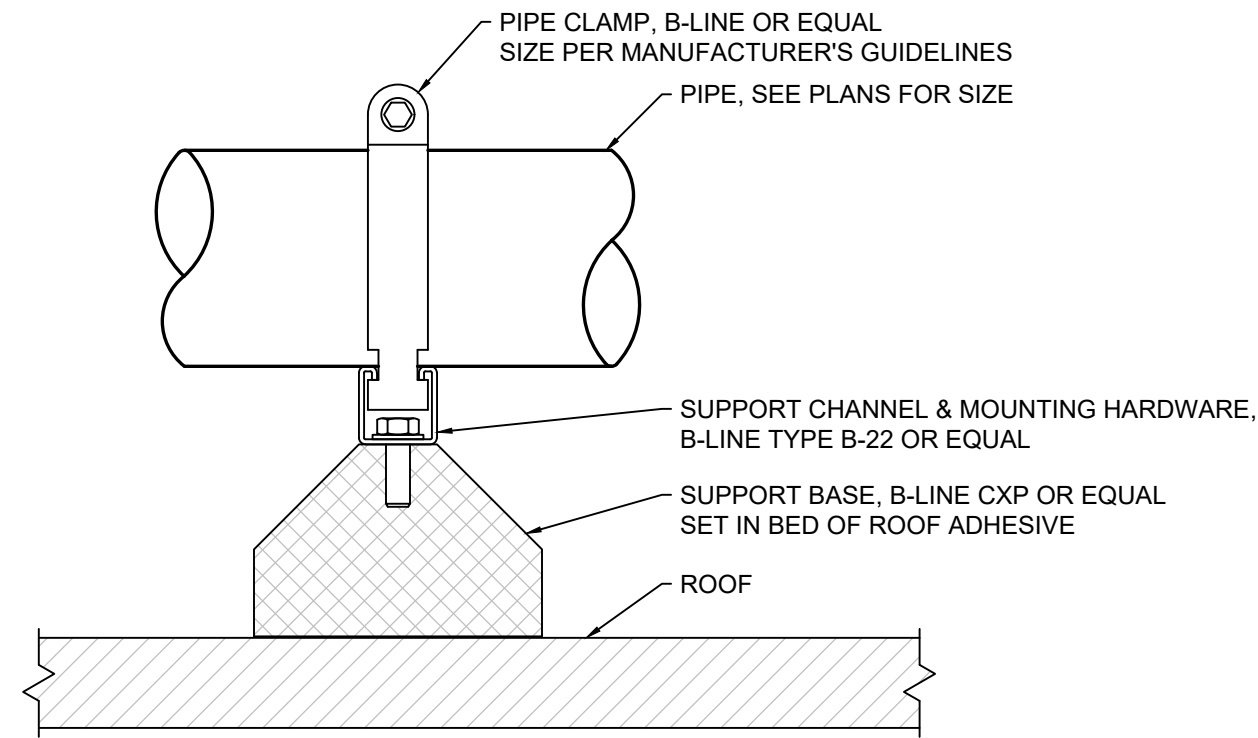
Project Number	2502
Date	1/15/25
Drawn by	DW
Checked by	GL

**M2.0**

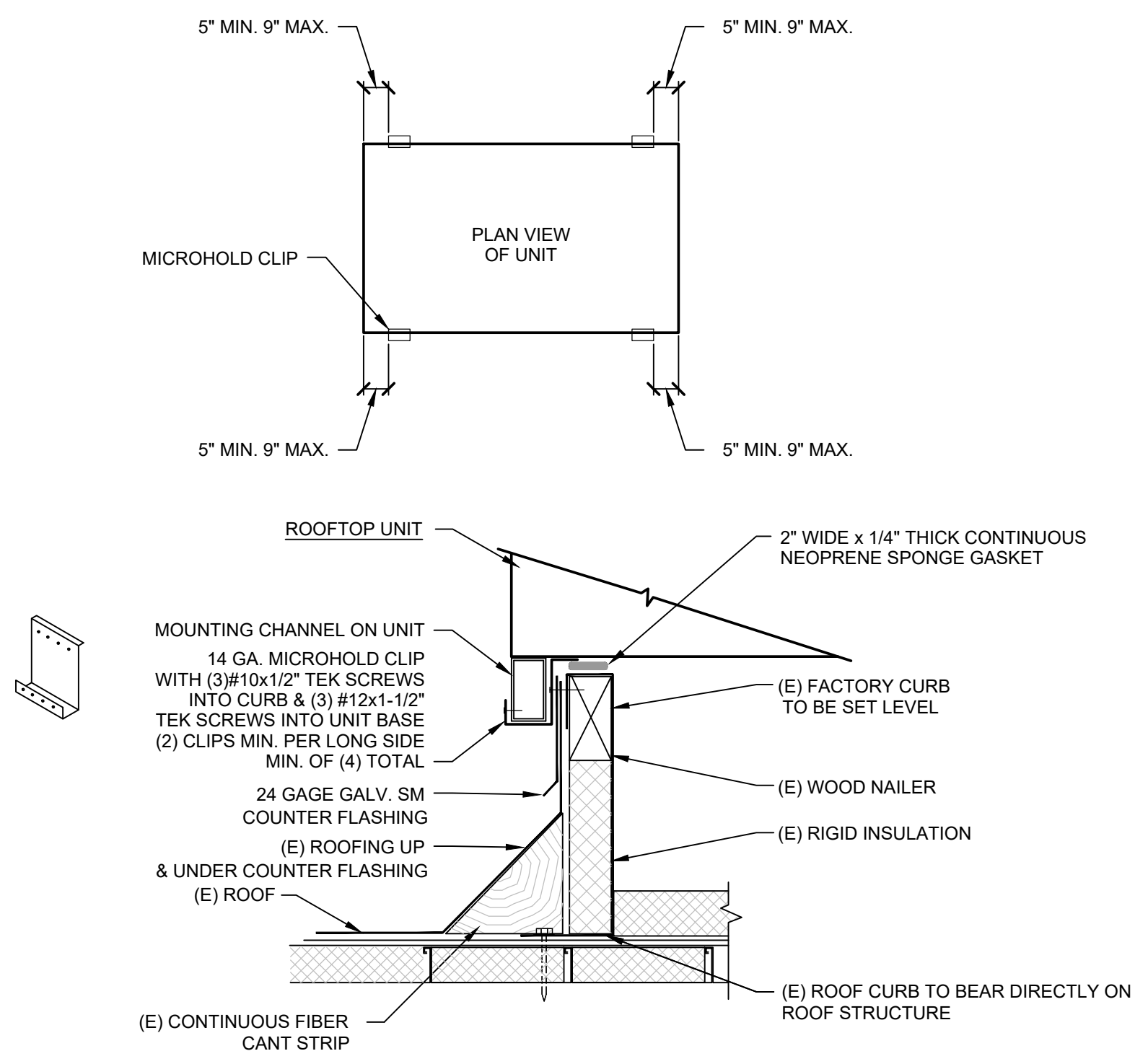
Plot Date & Time



**3 AC UNIT CONDENSATE & GAS PIPING DETAIL**  
 SCALE: N/A



**2 CONDENSATE PIPE SUPPORT DETAIL**  
 SCALE: N/A



**1 ROOFTOP AC CURB DETAIL**  
 SCALE: N/A

J:\2024 Jobs\24401A - Hughson HS Bldg 30 Unit Replacement\24401A - Mechanical.dwg, 2/4/2025 10:48:50 AM, d.wilson