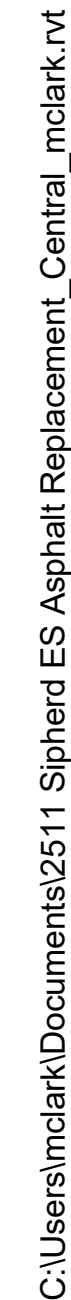


C:\Users\mclark\Documents\2511 Siphherd ES Asphalt Replacement\_Central\_mclark.rvt

--	--	--	--	--	--	--	--	--	--	--	--	--	--	--	--	--	--	--	--	--	--	--	--	--	--	--	--	--	--	--	--	--	--	--	--	--	--	--	--	--	--	--	--	--	--	--	--	--	--	--	--	--	--	--	--	--	--	--	--	--	--	--	--	--	--	--	--	--	--	--	--	--	--	--	--	--	--	--	--	--	--	--	--	--	--	--	--	--	--	--	--	--	--	--	--	--	--	--	--	--	--	--	--	--	--	--	--	--	--	--	--	--	--	--	--	--	--	--	--	--	--	--	--	--	--	--	--	--	--	--	--	--	--	--	--	--	--	--	--	--	--	--	--	--	--	--	--	--	--	--	--	--	--	--	--	--	--	--	--	--	--	--	--	--	--	--	--	--	--	--	--	--	--	--	--	--	--	--	--	--	--	--	--	--	--	--	--	--	--	--	--	--	--	--	--	--	--	--	--	--	--	--	--	--	--	--	--	--	--	--	--	--	--	--	--	--	--	--	--	--	--	--	--	--	--	--	--	--	--	--	--	--	--	--	--	--	--	--	--	--	--	--	--	--	--	--	--	--	--	--	--	--	--	--	--	--	--	--	--	--	--	--	--	--	--	--	--	--	--	--	--	--	--	--	--	--	--	--	--	--	--	--	--	--	--	--	--	--	--	--	--	--	--	--	--	--	--	--	--	--	--	--	--	--	--	--	--	--	--	--	--	--	--	--	--	--	--	--	--	--	--	--	--	--	--	--	--	--	--	--	--	--	--	--	--	--	--	--	--	--	--	--	--	--	--	--	--	--	--	--	--	--	--	--	--	--	--	--	--	--	--	--	--	--	--	--	--	--	--	--	--	--	--	--	--	--	--	--	--	--	--	--	--	--	--	--	--	--	--	--	--	--	--	--	--	--	--	--	--	--	--	--	--	--	--	--	--	--	--	--	--	--	--	--	--	--	--	--	--	--	--	--	--	--	--	--	--	--	--	--	--	--	--	--	--	--	--	--	--	--	--	--	--	--	--	--	--	--	--	--	--	--	--	--	--	--	--	--	--	--	--	--	--	--	--	--	--	--	--	--	--	--	--	--	--	--	--	--	--	--	--	--	--	--	--	--	--	--	--	--	--	--	--	--	--	--	--	--	--	--	--	--	--	--	--	--	--	--	--	--	--	--	--	--	--	--	--	--	--	--	--	--	--	--	--	--	--	--	--	--	--	--	--	--	--	--	--	--	--	--	--	--	--	--	--	--	--	--	--	--	--	--	--	--	--	--	--	--	--	--	--	--	--	--	--	--	--	--	--	--	--	--	--	--	--	--	--	--	--	--	--	--	--	--	--	--	--	--	--	--	--	--	--	--	--	--	--	--	--	--	--	--	--	--	--	--	--	--	--	--	--	--	--	--	--	--	--	--	--	--	--	--	--	--	--	--	--	--	--	--	--	--	--	--	--	--	--	--	--	--	--	--	--	--	--	--	--	--	--	--	--	--	--	--	--	--	--	--	--	--	--	--	--	--	--	--	--	--	--	--	--	--	--	--	--	--	--	--	--	--	--	--	--	--	--	--	--	--	--	--	--	--	--	--	--	--	--	--	--	--	--	--	--	--	--	--	--	--	--	--	--	--	--	--	--	--	--	--	--	--	--	--	--	--	--	--	--	--	--	--	--	--	--	--	--	--	--	--	--	--	--	--	--	--	--	--	--	--	--	--	--	--	--	--	--	--	--	--	--	--	--	--	--	--	--	--	--	--	--	--	--	--	--	--	--	--	--	--	--	--	--	--	--	--	--	--	--	--	--	--	--	--	--	--	--	--	--	--	--	--	--	--	--	--	--	--	--	--	--	--	--	--	--	--	--	--	--	--	--	--	--	--	--	--	--	--	--	--	--	--	--	--	--	--	--	--	--	--	--	--	--	--	--	--	--	--	--	--	--	--	--	--	--	--	--	--	--	--	--	--	--	--	--	--	--	--	--	--	--	--	--	--	--	--	--	--	--	--	--	--	--	--	--	--	--	--	--	--	--	--	--	--	--	--	--	--	--	--	--	--	--	--	--	--	--	--	--	--	--	--	--	--	--	--	--	--	--	--	--	--	--	--	--	--	--	--	--	--	--	--	--	--	--	--	--	--	--	--	--	--	--	--	--	--	--	--	--	--	--	--	--	--	--	--	--	--	--	--	--	--	--	--	--	--	--	--	--	--	--	--	--	--	--	--	--	--	--	--	--	--	--	--	--	--	--	--	--	--	--	--	--	--	--	--	--	--	--	--	--	--	--	--	--	--	--	--	--	--	--	--	--	--	--	--	--	--	--	--	--	--	--	--	--	--	--	--	--	--	--	--	--	--	--	--	--	--	--	--	--	--	--	--	--	--	--	--	--	--	--	--	--	--	--	--	--	--	--	--	--	--	--	--	--	--	--	--	--	--	--	--	--	--	--	--	--	--	--	--	--	--	--	--	--	--	--	--	--	--	--	--	--	--	--	--	--	--	--	--	--	--	--	--	--	--	--	--	--	--	--	--	--	--	--	--	--	--	--	--	--	--	--	--	--	--	--	--	--	--	--	--	--	--	--	--	--	--	--	--	--	--	--	--	--	--	--	--	--	--	--	--	--	--	--	--	--	--	--	--	--	--	--	--	--	--	--	--	--	--	--	--	--	--	--	--	--	--	--	--	--	--	--	--	--	--	--	--	--	--	--	--	--	--	--	--	--	--	--	--	--	--	--	--	--	--	--	--	--	--	--	--	--	--	--	--	--	--	--	--	--	--	--	--	--	--	--	--	--	--	--	--	--	--	--	--	--	--	--	--	--	--	--	--	--	--	--	--	--	--	--	--	--	--	--	--	--	--	--	--	--	--	--	--	--	--	--	--	--	--	--	--	--	--	--	--	--	--	--	--	--	--	--	--	--	--	--	--	--	--	--	--	--	--	--	--	--	--	--	--	--	--	--	--	--	--	--	--	--	--	--	--	--	--	--	--	--	--	--	--	--	--	--	--	--	--	--	--	--	--	--	--	--	--	--	--	--	--	--	--	--	--	--	--	--	--	--	--	--	--	--	--	--	--	--	--	--	--	--	--	--	--	--	--	--	--	--	--	--	--	--	--	--	--	--	--	--	--	--	--	--	--	--	--	--	--	--	--	--	--	--	--	--	--	--	--	--	--	--	--	--	--	--	--	--	--	--	--	--	--	--	--	--	--	--	--	--	--	--	--	--	--	--	--	--	--	--	--	--	--	--	--	--	--	--	--	--	--	--	--	--	--	--	--	--	--	--	--	--	--	--	--	--	--	--	--	--	--	--	--	--	--	--	--	--	--	--	--	--	--	--	--	--	--	--	--	--	--	--	--	--	--	--	--	--	--	--	--	--	--	--	--	--	--	--	--	--	--	--	--	--	--	--	--	--	--	--	--	--	--	--	--	--	--	--	--	--	--	--	--	--	--	--	--	--	--	--	--	--





Plot Date &amp; Time 6/2/2025 8:13:07 AM



ALL IMPROVEMENTS TO BE DONE SHALL BE DONE IN ACCORDANCE WITH THE REQUIREMENTS OF THE CITY OF MODESTO'S DEPARTMENT OF PUBLIC WORKS STANDARD SPECIFICATIONS AND THE LATEST EDITION OF THE STATE OF CALIFORNIA DEPARTMENT OF TRANSPORTATION STANDARD SPECIFICATIONS.

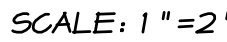
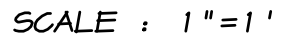
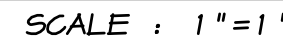
- ## UTILITIES

- STORM DRAIN

- ## EROSION AND SEDIMENT CONTROL

- 
- STANDARD FRAME AND GRATE, USE SOUTH BAY FOUNDRY C1510/C1515 OR EQUAL
- 4' x 8' CONCRETE APRON DERESSED AS SHOWN AND FINISH GRADES PER PLAN.
- 8'
- 1' 2' 4' 2' 1'
- 8" MIN. 5' MIN. 8' MIN.
- 10" R.C.P. BARREL
- 11' MIN., 15' MAX.
- 6" MIN.
- THE DRY WELL TO BE INSTALLED SHALL BE CONSTRUCTED AS PER THE CITY OF HOUSTON STANDARDS.
- 8" C.M.P., LENGTH AS REQUIRED, THE INVERT OF 8" C.M.P. AT THE DRYWELL TO BE 2' HIGHER THAN THE TOP OF THE 8" C.M.P. AT THE CATCH BASIN

SCALE: 1"=2'



DRAWN BY: J. T. S.  
DATE: 5/30/25 1:00  
SCALE: NOTED  
DWG: 1580A-BASE  
CHECKED: R. D. C.  
JOB #: 1580-25

SHEET **C1**

OF





EXISTING TOPOGRAPHY  
CHRISTINE SIPHERD ELEMENTARY  
MODesto CALIFORNIA

- 
- RYAN CARREL, R.C.E. 61619  
JEFF SHELTON, R.C.E. 84078

DRAWN BY: J. T. S.  
DATE: 5/30/25 1:00  
SCALE: 1"=20'  
DWG: 1580A-BASE  
CHECKED: R. D. C.  
JOB #: 1580-25

SHEET **C2**  
OF

- ## BENCHMARK



Know what's **below**.  
**Call** before you dig.



## KEY NOTES

- EXISTING FENCE FABRIC TO BE REMOVED AND SALVAGED FOR RE-INSTALLATION AFTER PAVING OPERATIONS ARE COMPLETE. EXISTING POSTS ARE TO REMAIN UNDISTURBED.
- EX. POLE TO REMAIN UNDISTURBED.
- EX. UTILITY BOX TO REMAIN. SEE GENERAL NOTE 4.

SAN/CUT EX. PAVEMENT ADJACENT TO EX. FENCE.

EX. TABLES TO BE REMOVED, TYP. OF 3. CUT POSTS FLUSH WITH CONCRETE AND GRIND SMOOTH. FILL VOID WITH CONCRETE TO PROVIDE FLUSH FINISH CONDITION.

EX. STRUCTURE TO REMAIN UNDISTURBED.

EX. WHEEL STOPS TO BE REMOVED AND SALVAGED FOR REUSE ON THIS PROJECT.

EX. SITE LIGHT TO REMAIN UNDISTURBED, TYP. OF 2.

## LEGEND

- EX. GROUND ELEVATION
- EX. EDGE OF PAVEMENT ELEVATION
- EX. A.C. PAVEMENT ELEVATION
- EX. RIM ELEVATION
- EX. CONCRETE ELEVATION
- EX. CURB AND GUTTER
- EX. EDGE OF PAVEMENT
- EX. MANHOLE
- EX. CLEAN-OUT
- EX. DRYWELL
- EX. CATCH BASIN
- EX. BUBBLE UP
- EX. WATER METER
- EX. FIRE HYDRANT
- EX. GATE VALVE
- EX. JOINT POLE
- EX. GUARD POST
- EX. TELEPHONE BOX
- EX. ELECTRICAL BOX
- EX. LANDSCAPE IRRIGATION BOX
- EX. ELECTROLIER
- EX. FENCE
- EX. TREE, SPREAD DRAWN TO SCALE
- EX. AREA OF CONCRETE
- EX. AREA OF ASPHALT PAVEMENT
- APPROX. LIMITS OF DEMOLITION

## GENERAL NOTES

- LANDSCAPE AND LANDSCAPE IRRIGATION FACILITIES SHALL BE REMOVED, CAPPED, MODIFIED OR RELOCATED AS REQUIRED TO PROVIDE IRRIGATION TO AREAS OF LANDSCAPE THAT ARE TO REMAIN. WORK TO BE COORDINATED WITH DISTRICT STAFF.
- CONCRETE TO BE REMOVED SHALL BE SAN/CUT IN STRAIGHT LINES, OR REMOVED TO THE NEAREST COLD JOINT, AS REQUIRED.
- ASPHALT PAVEMENT SHALL BE SAN/CUT IN STRAIGHT LINES, AS SHOWN ON THE PLAN.
- ALL UTILITY BOXES AND COVERS, FRAMES AND GRATES WITHIN THE AREA OF NEW ASPHALT PAVEMENT SHALL BE ADJUSTED TO FINISH GRADE AND RECEIVE A NEW CONCRETE COLLARS.
- THE CONTRACTOR SHALL PROVIDE PROTECTION TO FACILITIES THAT ARE WITHIN THE AREA OF DEMOLITION, BUT ARE TO REMAIN. REFER TO THE PLAN FOR LOCATIONS.
- THE LIMITS OF DEMOLITION SHOWN ON THE PLAN ARE APPROXIMATE ONLY. THE CONTRACTOR SHALL DETERMINE THE EXACT DEMOLITION LIMITS LOCATIONS BASED ON ACTUAL FIELD CONDITIONS, AS REQUIRED.

## BENCHMARK

CITY OF MODESTO BENCHMARK 665B, BEING A BRASS DISC ON ELECTROLIER BASE AT THE CENTERLINE OF SAGINAW COURT ON THE WEST SIDE OF LILLIAN DRIVE. ELEVATION = 109.6



Know what's below.  
Call before you dig.

ASSOCIATED  
ENGINEERING  
GROUP

4206 TECHNOLOGY DRIVE, SUITE 4, MODESTO, CA 95356  
PHONE (209) 945-3380 FAX (209) 945-3875 www.aesgroup.com

DEMOLITION PLAN  
CHRISTINE SIPHERD ELEMENTARY  
MODESTO  
CALIFORNIA

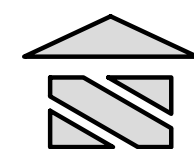
RYAN CARREL, R.C.E. 61619  
JEFF SHELTON, R.C.E. 64078

DRAWN BY J.T.S.  
DATE: 5/30/25 1:00  
SCALE: 1"=20'  
DWG. 1580A-BASE  
CHECKED: R.D.C.  
JOB #: 1580-25

SHEET  
C3  
OF

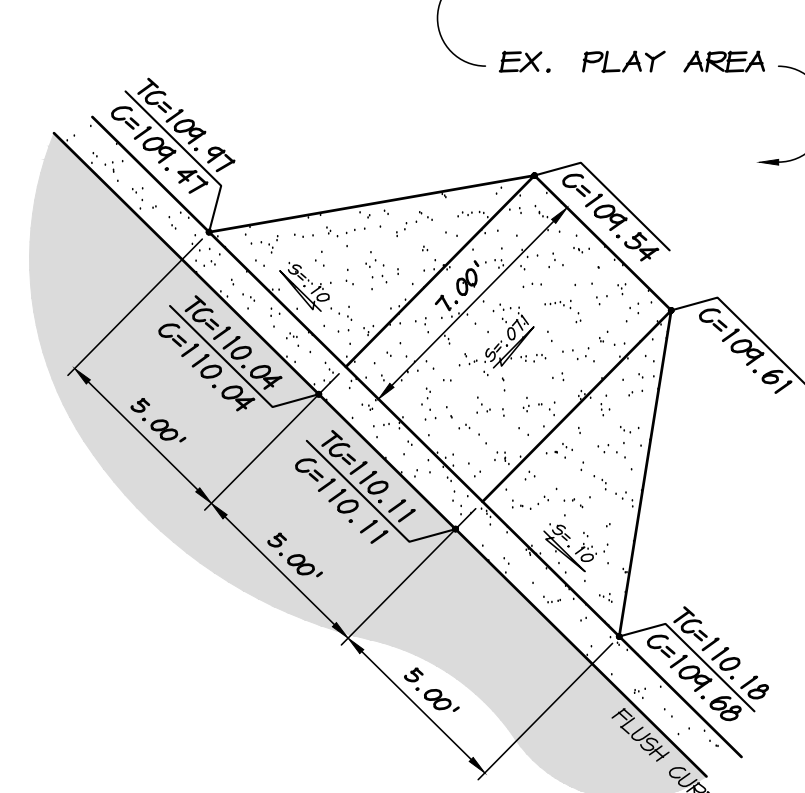


E. ORANGEBURG AVENUE

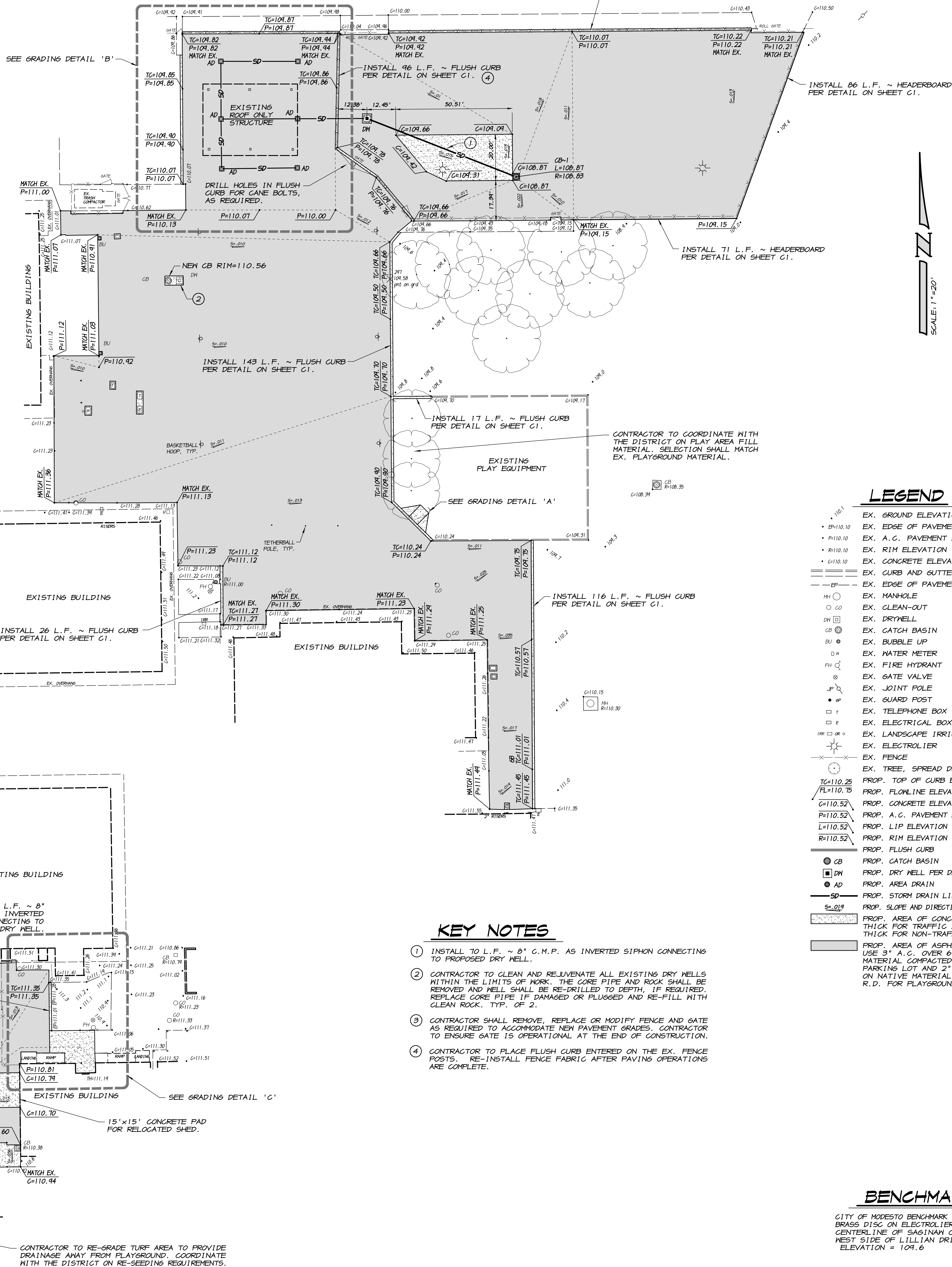


GRADING DETAIL 'A'

SCALE: 1"=5'



SEE GRADING DETAIL 'B'



LEGEND

- EX. GROUND ELEVATION
- EX. EDGE OF PAVEMENT ELEVATION
- EX. A.C. PAVEMENT ELEVATION
- EX. RIM ELEVATION
- EX. CONCRETE ELEVATION
- EX. CURB AND GUTTER
- EX. EDGE OF PAVEMENT
- EX. MANHOLE
- EX. CLEAN-OUT
- EX. DRYWELL
- EX. CATCH BASIN
- EX. BUBBLE UP
- EX. WATER METER
- EX. FIRE HYDRANT
- EX. GATE VALVE
- EX. JOINT ROLL
- EX. GUARD POST
- EX. TELEPHONE BOX
- EX. ELECTRICAL BOX
- EX. LANDSCAPE IRRIGATION BOX
- EX. ELECTROLIER
- EX. FENCE
- EX. TREE, SPREAD DRAWN TO SCALE
- PROP. TOP OF CURB ELEVATION
- PROP. FLOWLINE ELEVATION
- PROP. CONCRETE ELEVATION
- PROP. A.C. PAVEMENT ELEVATION
- PROP. LIP ELEVATION
- PROP. RIM ELEVATION
- PROP. FLUSH CURB
- PROP. CATCH BASIN
- PROP. DRY WELL PER DETAIL ON SHEET C1
- PROP. AREA DRAIN
- PROP. STORM DRAIN LINE
- PROP. SLOPE AND DIRECTION OF FLOW
- PROP. AREA OF CONCRETE, USE 6" THICK FOR TRAFFIC AREAS AND 4" THICK FOR NON-TRAFFIC AREAS.
- PROP. AREA OF ASPHALT PAVEMENT, USE 3" A.C. OVER 6" A.B. ON NATIVE MATERIAL COMPACTED TO 95% R.D. FOR PARKING LOT AND 2" A.C. OVER 4" A.B. ON NATIVE MATERIAL COMPACTED TO 95% R.D. FOR PLAYGROUND.

KEY NOTES

- INSTALL 10 L.F. ~ 8" C.M.P. AS INVERTED SIPHON CONNECTING TO PROPOSED DRY WELL.
- CONTRACTOR TO CLEAN AND RE-JUVENATE ALL EXISTING DRY WELLS WITHIN THE LIMITS OF WORK. THE CORE PIPE AND ROCK SHALL BE REMOVED AND WELL SHALL BE RE-DRILLED TO DEPTH. IF REQUIRED, REPLACE CORE PIPE IF DAMAGED OR FLUGGED AND RE-FILL WITH CLEAN ROCK, TYP. OF 2.
- CONTRACTOR SHALL REMOVE, REPLACE OR MODIFY FENCE AND GATE AS REQUIRED TO ACCOMMODATE NEW PAVEMENT GRADES. CONTRACTOR TO ENSURE GATE IS OPERATIONAL AT THE END OF CONSTRUCTION.
- CONTRACTOR TO PLACE FLUSH CURB ENTERED ON THE EX. FENCE POSTS. RE-INSTALL FENCE FABRIC AFTER PAVING OPERATIONS ARE COMPLETE.

BENCHMARK

CITY OF MODESTO BENCHMARK 665B, BEING A BRASS DISC ON ELECTROLIER BASE AT THE CENTERLINE OF SAGINAH COURT ON THE WEST SIDE OF LILLIAN DRIVE. ELEVATION = 109.6



ASSOCIATED  
ENGINEERING  
GROUP

GRADING AND DRAINAGE PLAN  
CHRISTINE SIPHERD ELEMENTARY  
CALIFORNIA

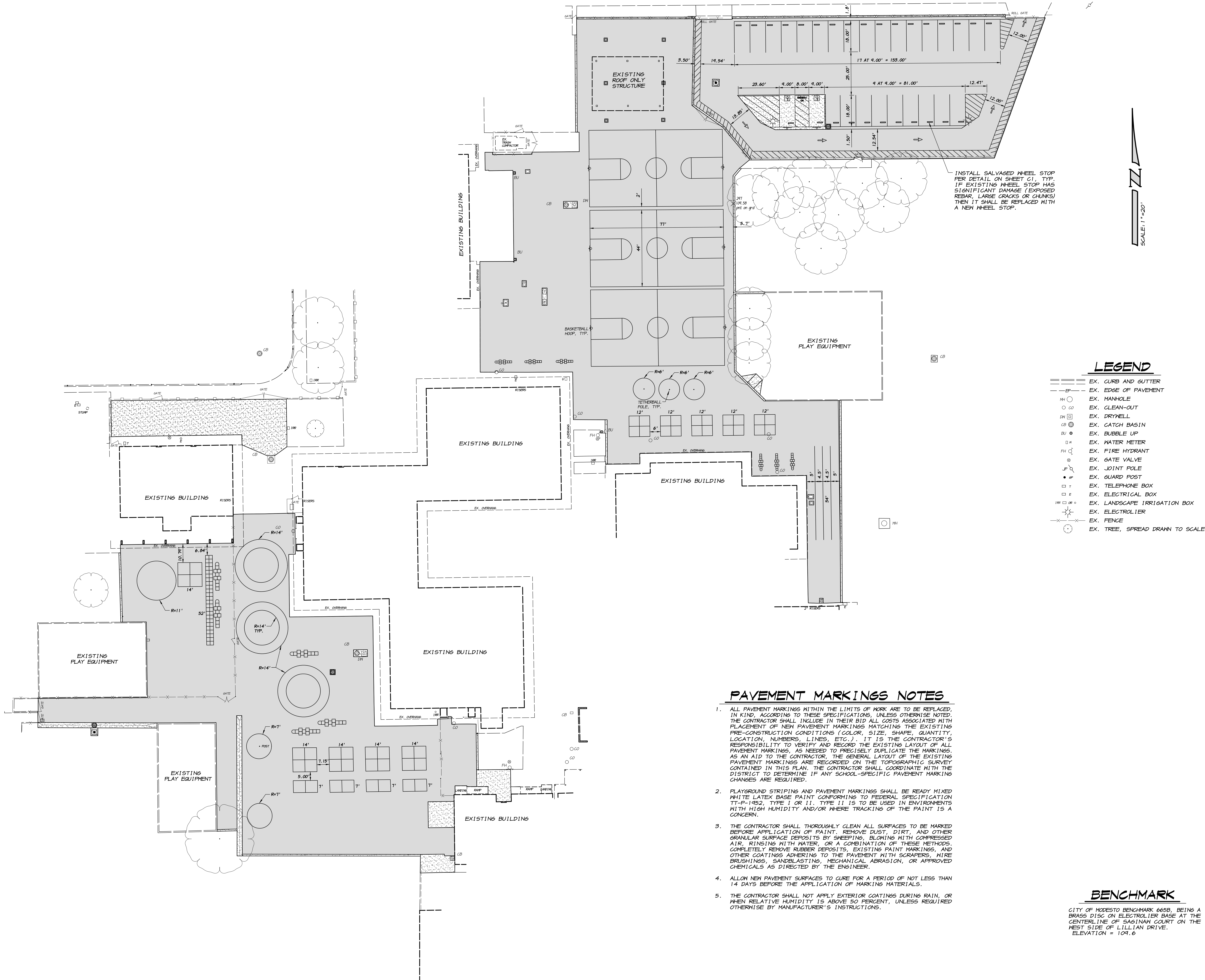
RYAN CARREL, R.C.E. 61619  
JEFF SHELTON, R.C.E. 84078

DRAWN BY: J.T.S.  
DATE: 5/30/25 1:00  
SCALE: 1"=20'  
DWG: 1580A-BASE  
CHECKED: R.D.C.  
JOB #: 1580-25

SHEET  
C4  
OF







LEGEND

- EX. CURB AND GUTTER
- EX. EDGE OF PAVEMENT
- EX. MANHOLE
- EX. CLEAN-OUT
- EX. DRYWELL
- EX. CATCH BASIN
- EX. BUBBLE UP
- EX. WATER METER
- EX. FIRE HYDRANT
- EX. GATE VALVE
- EX. JOINT POLE
- EX. GUARD POST
- EX. TELEPHONE BOX
- EX. ELECTRICAL BOX
- EX. LANDSCAPE IRRIGATION BOX
- EX. ELECTROLIER
- EX. FENCE
- EX. TREE, SPREAD DRAWN TO SCALE

PAVEMENT MARKINGS NOTES

- ALL PAVEMENT MARKINGS WITHIN THE LIMITS OF WORK ARE TO BE REPLACED, IN KIND, ACCORDING TO THESE SPECIFICATIONS, UNLESS OTHERWISE NOTED. THE CONTRACTOR SHALL INCLUDE IN THEIR BID ALL COSTS ASSOCIATED WITH PLACEMENT OF NEW PAVEMENT MARKINGS MATCHING THE EXISTING PRE-CONSTRUCTION CONDITIONS (COLOR, SIZE, SHAPE, QUANTITY, LOCATION, NUMBERS, LINES, ETC.). IT IS THE CONTRACTOR'S RESPONSIBILITY TO VERIFY AND RECORD THE EXISTING LAYOUT OF ALL PAVEMENT MARKINGS, AS NEEDED TO PRECISELY DUPLICATE THE MARKINGS. AS AN AID TO THE CONTRACTOR, THE GENERAL LAYOUT OF THE EXISTING PAVEMENT MARKINGS ARE RECORDED ON THE TOPOGRAPHIC SURVEY CONTAINED IN THIS PLAN. THE CONTRACTOR SHALL COORDINATE WITH THE DISTRICT TO DETERMINE IF ANY SCHOOL-SPECIFIC PAVEMENT MARKING CHANGES ARE REQUIRED.
- PLAYGROUND STRIPING AND PAVEMENT MARKINGS SHALL BE READY MIXED WHITE LATEX BASE PAINT CONFORMING TO FEDERAL SPECIFICATION TT-P-1452, TYPE I OR II. TYPE II IS TO BE USED IN ENVIRONMENTS WITH HIGH HUMIDITY AND/OR WHERE TRACKING OF THE PAINT IS A CONCERN.
- THE CONTRACTOR SHALL THOROUGHLY CLEAN ALL SURFACES TO BE MARKED BEFORE APPLICATION OF PAINT. REMOVE DUST, DIRT, AND OTHER GRANULAR SURFACE DEPOSITS BY SWEETING, BLOWING WITH COMPRESSED AIR, RINSING WITH WATER, OR A COMBINATION OF THESE METHODS. COMPLETELY REMOVE RUBBER DEPOSITS, EXISTING PAINT MARKINGS, AND OTHER COATINGS ADHERING TO THE PAVEMENT WITH SCRAPERS, WIRE BRUSHINGS, SANDBLASTING, MECHANICAL ABRASION, OR APPROVED CHEMICALS AS DIRECTED BY THE ENGINEER.
- ALLOW NEW PAVEMENT SURFACES TO CURE FOR A PERIOD OF NOT LESS THAN 14 DAYS BEFORE THE APPLICATION OF MARKING MATERIALS.
- THE CONTRACTOR SHALL NOT APPLY EXTERIOR COATINGS DURING RAIN, OR WHEN RELATIVE HUMIDITY IS ABOVE 50 PERCENT, UNLESS REQUIRED OTHERWISE BY MANUFACTURER'S INSTRUCTIONS.

BENCHMARK

CITY OF MODESTO BENCHMARK 665B, BEING A BRASS DISC ON ELECTROLIER BASE AT THE CENTERLINE OF SAGINAW COURT ON THE WEST SIDE OF LILLIAN DRIVE. ELEVATION = 109.6



Know what's below.  
Call before you dig.